

TECHNICAL RIDER

MÉDUSES



Artistic director & choreography: Vincent Glowinski
Software Developer & artistic consultant: Jean-Francois Roversi
Dance: Vincent Glowinski, Luke Jessop
Music: Elko Blijweert, Teun Verbruggen
Dramaturgic assistant: Greet Van Poeck
Artistic coaching: Wim Vandekeybus
Light design & technical direction: Davy Deschepper

Vincent Glowinski accompanied by 4 performers whose Laura ughetto, Aminata Abdoulayehama, Faustine Boissery, Raphaëlle Corbisier, Sorana Delhommeau, Mariama Dieng, Lore Huysmans, Edouard Pagant, Lionel Robyr, Samuel Padolus, Chloé Larrere, Eline Leonard, Silke Sarens, Mariama Dieng, Sorana Delhommeau **Musique originale:** Elko Blijweert, Teun Verbruggen

Production: Entropie Production **Coproduction:** Ultima Vez, Open latitudes (3) - European project, Life Long Burning (Programme Culture Europe), Cultuurcentrum Brugge - Festival December Dance (Be), Charleroi/Danses (Be), MAC - Festival EXIT (Créteil - Fr), Manège Mons/Maubeuge - Festival VIA (Be/Fr) Avec les soutiens de WBT/D, Vlaamse Gemeenschapscommissie, Cimatics. Résidence: Ultima Vez (Brussels), KWP Pianofabriek (Brussels)



Contact: Pierre-Laurent Boudet (Entropie Production)
pierlo.boudet@gmail.com - +32(0) 484 650 830

GENERAL

The stage of the venue should be at least 12m wide, 12m deep and a rigging grid of minimum 8m height. These dimensions are very important as we have a video set-up that doesn't work if we don't have these dimensions.

The interaction between video, performers, light, stage is really crucial for this performance, so we will need quite some time to do all technical corrections.

Adjustments of this technical rider may be made if required due to specific features of the venue but only in negotiation with the company.

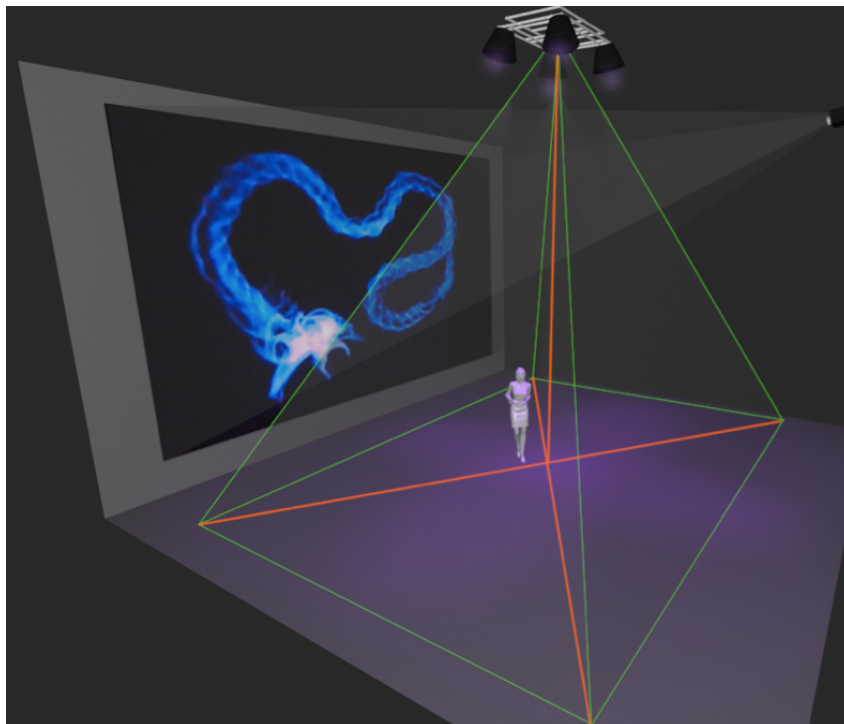
THIS TECHNICAL RIDER IS AN INTEGRAL PART OF THE CONTRACT.

Please provide us with:

- A detailed technical plan of the venue.
- A full list of stage, sound and light equipment.
- The name and co-ordinates of your technical director, production manager.

Duration of the performance:

- Approximately 60min, no interval
- No one will be allowed to enter the house once the performance has started.
- We need a complete black out in the venue



PLANNING TYPE

Arrivée de l'équipe technique J – 2 en soirée.

Prévoir parking camionnette.

Jour # 1 : 3 services début de la journée à 9h00			EQUIPE THEATRE			
			EQUIPE COMPAGNIE			
Heure	Objet	MÉDUSES	Electros	Son/Vidéo	Plateau	habilleuse
9:00 - 13:00	Déchargement du décor	Tom De White, Jean-François Roversi	3	1	2	
	Installation vidéo, son et éclairage					
13:00 - 14:00	Pause	3 REPAS: Tom De White, Jean-François Roversi				
14:00 - 18:00	Installation vidéo et éclairages		3	1	1	
	Pointage					
18:00 – 19:00	Pause	3 REPAS: Tom De White, Jean-François Roversi, Vincent Glowinski				
19:00 - 21:00	Répétition technique	Tom De White, Jean-François Roversi, Vincent Glowinski	1		1	
Jour # 2 : 2 services début de la journée à 9h00			Electros	Son	Plateau	habilleuse
9:00 – 13:00	Répétition	Tom De White, Jean-François Roversi, Vincent Glowinski, Teun Verbruggen, Elko, Dimy	1	1	1	
13:00 – 14:00	Pause / Repas	7 REPAS: Tom De White, Jean-François Roversi, Vincent Glowinski, Teun Verbruggen, Elko, Dimy, PLB				
14:00 - 16:00	Répétition	Tom De White, Jean-François Roversi, Vincent Glowinski, Teun Verbruggen, Elko, Dimy	1	1	1	
16:00 – 18:00	Mise et réglages	Tom De White, Jean-François Roversi, Vincent Glowinski, Teun Verbruggen, Elko, Dimy				
18:00 – 19:00	Pause / Repas	7 REPAS: Tom De White, Jean-François Roversi, Vincent Glowinski, Teun Verbruggen, Elko, Dimy, PLB				
20:00 - 21:00	SPECTACLE + Déchargement	Tom De White, Jean-François Roversi, Vincent Glowinski, Teun Verbruggen, Elko, Dimy	1	1	1	1

STAGE

(see separate drawing)

The company provides:

- We bring a grey projection back drop,

To be provided by the theater:

- Black dance vinyl covering the whole stage
- Metal tubes to put in our back drop
- Black backdrop, borders and legs will be decided on the day of arrival. We will make a black box.
- For the light, we need 2 sidebars aprox 6m from the center line, 3m50 high, min 8m deep. Please provide all materials for this (rigging, tubes, trusses,...)

VIDEO

The company provides:

- video beamer 10000 ansilumen, rigged above the stage
- camera, rigged above the stage (min 8m heigh)
- 2 video monitors
- computer
- cables, ...

To be provided by the theater:

- min 25m vga cable
- a quality video connection between regie and stage (in VGA or HDMI-D, out VGA)

LIGHT

(see separate drawing)

To be provide by the theater:

- 25 x PC 1kw + filter holders + barndoors
- 8 x profile 1kw + filter holder
- 1 x Par64 CP60
- 1x Par64 CP62 on floorstand
- 2 x Par 64 CP62 shortnose on floorstand

Below, there is a list of color gels we need. If this is a problem in your theater, please let us know in advance.

PC 1kw	Lee 200 + Rosco 119	11x	
	Lee 144		4x
	Lee 135		6x
Profile 1kw	Lee 711		2x
	Lee 201		5x

At least 65 dimmer channels, enough dmx cable (we have some dmx controlled spots with us), dmx controlled house lights,

Provided by the company

- 12 x pinspot
- 1 x strobe atomic (dmx)
- 1 x HQI 400w
- 5x black light (dmx)
- 1x floor spot
- light desk (desktop)

Pre rigging is an option if we can make all the decisions about the lights and the set in advance.

SOUND

All music is live performed by a drummer and a guitar player.

We need a sound engineer from the theater

To be provided by the theater:

- A mixing console, 4 band parametric eq, min 4 aux sends
- 4 quality wedges, min 12inch + 4 channels equalizers(1/3 octave)
- FOH (L/R)
- necessary mic's to amplify drum (kick, snare, 2 x overhead) and 2 guitar amps
- mic stands, multicore, XLR cables,...

Sound should be set up next to the light desk.

Sound and light is operated by 1 person.

COSTUME AND DRESSING ROOMS

Costumes

CLEANING INSTRUCTIONS

Costumer: Annabelle Locks : 0032 492 943 465

Vincent Glowinski :

- white trousers (long) : machine wash 40° - tumble dry low heat
- white top (V neck) : machine wash 40° - air dry
- white zip jacket : machine wash 40° - air dry / tumble dry low heat if necessary
- red boxer : hand wash separately 30° - spin dry separately - air dry

Luc Jessop :

- white trousers (short) : machine wash 40° - tumble dry low heat
- white tank : machine wash 40° - air dry
- white sweater with hood : machine wash 40° - tumble dry low heat
- olive green boxer : hand wash separately 30° - spin dry separately - air dry The boxers are hand-dyed, wash separately from white, and do not wash together. Spin-dry the boxers separately.

Dressing rooms

- Heated dressing rooms with table, chairs, mirror and showers for 4 performers
- Mineral drinking water, some fruits,...

Parking space

- Please provide parking space for a small van (set) and 2 cars.

CONTACTS

Artistic:

vincentglowinski@gmail.com

zanroversi@yahoo (Jean Francois Roversi)

Technical:

davy@ultimavez.com

+32 486 563820

Booking, production:

pierlo.boudet@gmail.com

+32 484 650 830